

AF CB **CP** CS CV HD HS R SL WE XE XL

## SPECIFICATIONS (See notes 1 and 2)

**Loudspeaker Type:** 2-way, Full-range, bass ported

**Operating Range:** 50 Hz - 18 kHz  
50 Hz - 18 kHz (+/-5dB)

### Max Input (Passive):

400W continuous, 1000W Program  
40 volts RMS, 89 volts momentary peak

### Recommended Power Amplifier:

830W to 1200W @ 4 Ohms

### Max Inputs (Biamp):

LF: (Same as for Passive mode)  
Recommended LF Power Amp: (Same as for Passive mode)  
HF: 50W continuous, 125W program  
20 volts RMS, 45 volts momentary peak  
Recommended HF Power Amp: 100W to 150W @ 8 Ohms

### Sensitivity 1W/1m:

98 dB SPL (50 Hz - 16 kHz 1/3 octave bands)  
98 dB SPL (250 Hz - 4 kHz speech range)

**Maximum Output:** 124 dB SPL / 131 dB SPL (peak)

**Nominal Impedance (passive):** 4 Ohms

**Min Impedance:** 3.2 Ohms @ 145 Hz

**Nominal Impedances (Biamp):** LF: 4 Ohms, HF: 8 Ohms

### Nominal -6 dB Beamwidth:

80° H (+0° / -39°, 2 kHz - 10 kHz)  
35° V (+1° / -19°, 2 kHz - 10 kHz)

**Axial Q / DI:** 26.1 / 14.2, 2 kHz - 10 kHz

**Crossover Frequency:** 1.8 kHz

**Recommended Signal Processing:** 40 Hz high pass filter

### Drivers:

LF (2) 15", Ferrofluid-cooled  
HF (1) 1" exit, titanium diaphragm

**Driver Protection:** PowerSense™ DDP

**Input Connection:** (5) terminal barrier strip

**Controls:** Passive / Biamp switch  
3 position HF level switch

**Enclosure:** 13-ply 18 mm Baltic birch, Tuf-Coat™ finish (see options)

**Enclosure Hardware:** None

### Mounting / Rigging Provisions:

(6) 3/8-16 rigging points, W.L.L. 150 lb. vertical pull each

### Grille:

16 gauge perforated steel, black powder coated (see options)

**Required Accessories:** None

**Supplied Accessories:** None

**Optional Accessories:** EYBLKIT: (4) 3/8-16 forged eyebolts

### Dimensions:

Height: 41.5 in. / 1054 mm

Width (front): 19.75 in. / 502 mm

Width (rear): 13 in. / 331 mm

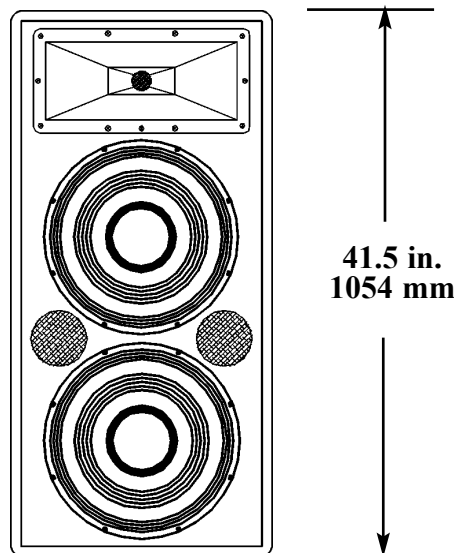
Depth: 17.9 in. / 455 mm

**Weight:** 98 lb. / 44.5 kg

**Shipping Weight:** 110 lb. / 49.9 kg

**1. Sensitivity:** Free field pink noise measurement at 20 ft / 6.1 m at 25% power; extrapolated to 1 meter and an input of 2 volts RMS.

**2. Watts:** All wattage figures are calculated using the rated nominal impedance.



## APPLICATIONS:

- Theatres / Auditoria / Houses of Worship
- Sport Facilities & Health Clubs
- Clubs
- A/V Systems

## FEATURES:

- Black, White Tuf-Coat™ finish, or Unfinished Exterior
- 1" Titanium HF with 3 Position Level Switch
- 90° H x 40° V Pattern
- Passive and Biamp Operating Modes
- PowerSense™ DDP (Dynamic Driver Protection)
- Small Profile Trapezoidal Enclosure For Tight Spaces
- Load-rated 3/8" Rigging Points
- No Handles for Clean Appearance
- Barrier Strip Input on Steel Input Panel

## DESCRIPTION

The CPL47 is a versatile, two-way full-range bass reflex loudspeaker system engineered for installation in theaters, houses of worship and corporate applications. CPL systems may be ordered to match your specific applications. CPL systems may be ordered with a variety of finishes - black Tuf-Coat™ finish with a black perforated steel grille, white Tuf-Coat™ finish with removable white grille cloth covering the grille, and unfinished wood surface with removable brown grille cloth covering the metal grille. Five year limited warranty.

## OPTIONS:

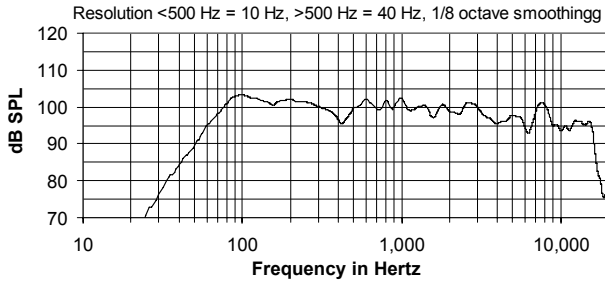
CPL47-94B = black Tuf-Coat™ finish,

CPL47-94W = white Tuf-Coat™ finish

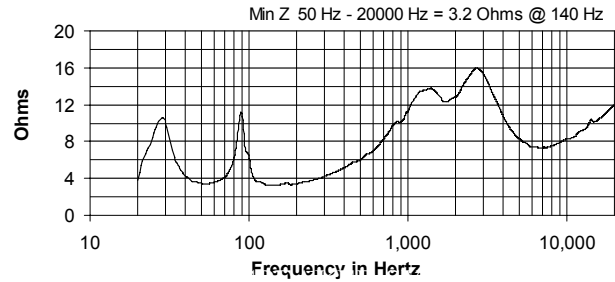
CPL47-94U = unfinished

Grille: white has white cloth covering, unfinished has brown cloth covering

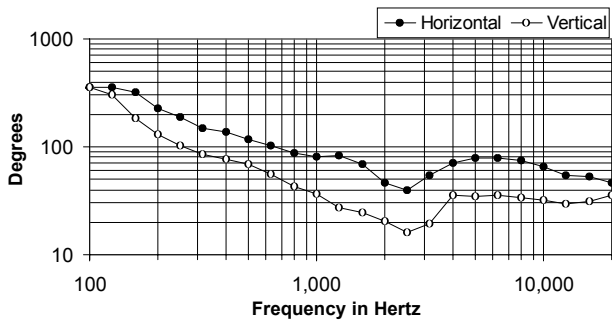
## FREQUENCY RESPONSE



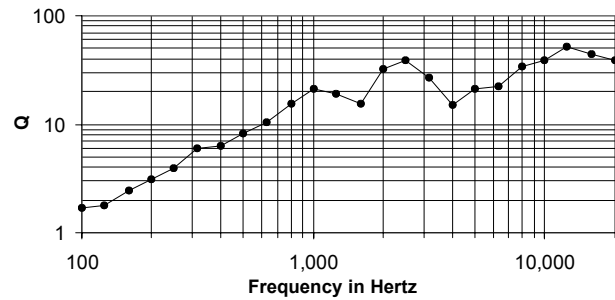
## IMPEDANCE



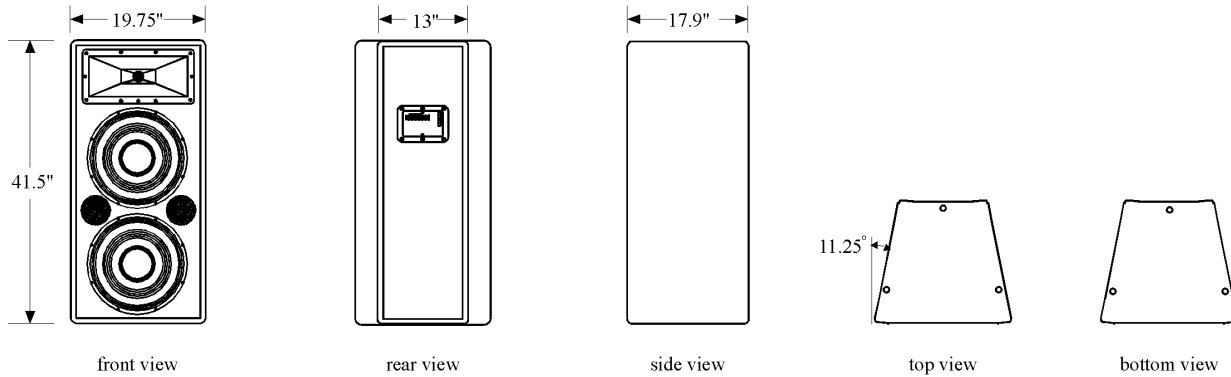
## BEAMWIDTH



## AXIAL Q



## DIMENSIONS



## ARCHITECTS' AND ENGINEERS' SPECIFICATIONS

The loudspeaker system shall be a two-way, full-range bass reflex trapezoidal design with two 15 in. Ferrofluid-cooled woofers and one 1 in. exit HF driver with a titanium diaphragm mounted to a 90° HF fiberglass horn. Drivers shall be connected to an integral crossover with a crossover frequency of 2 kHz and integral over-current protection circuitry using high positive current coefficient resistors. There shall be one five-terminal barrier strip input connector with built-in jumpers for bi-amplified connection. The loudspeaker enclosure shall be 13-ply Baltic birch plywood with a 16 gauge perforated steel grille Tuf-Coat™ finish. The system shall have an amplitude response of 50 Hz to 18 kHz (+/- 5 dB), input capability of 40V RMS, 98 dB sensitivity at one meter and 2V / 4 ohms nominal impedance. The nominal dispersion shall be 80°H x 35° V from 2 kHz to 10 kHz. The loudspeaker shall be 41.5 in. (1054 mm) H x 19.75 in. (502 mm) W (front) x 13 in. (331 mm) W (rear) x 17.9 in. (455 mm) D and weigh 98 lbs (44.5 kg).