

July 2015

Coverage and Clarity Issues Solved at Ridley High School Auditorium



Ridley High School in Folsom, Pennsylvania has an attractive auditorium well designed for dramatic performances and musicals. Unfortunately, the auditorium's original loudspeaker system was installed above the acoustic clouds resulting in numerous dead spots, poor vocal clarity and muffled music quality.

In early 2015, after several unsuccessful repair attempts, a new system was installed using three I SERIES model [IP8-1152/96](#) loudspeakers suspended below the acoustic clouds and arranged in an exploded cluster configuration to cover the auditorium evenly.

The system now has smooth coverage with no dead spots and the vocal clarity and musical quality are excellent. Although the original system included subwoofers, the I SERIES loudspeakers have plenty of bass with no subwoofers needed.

R SERIES Provides Even Coverage While Avoiding Neighborhood Spill



With typical enrollment of 1750 students, Mt. Lebanon High School is an award-winning public high school in western Pennsylvania. Home to the Mt. Lebanon Blue Devils football team, Mt. Lebanon's stadium seats 7200 fans and boasts an AstroTurf football field with synthetic running track. To complement this modern facility, in 2014 the school decided to update the stadium's audio system which had deteriorated from age and exposure to the weather.

The new football stadium system was based on [R2-MAX](#) loudspeakers which were installed on lighting poles behind the home team and away team bleachers.

Each pole has an R2-66MAX long-throw covering the field and end zones and an R2-94MAX medium-throw loudspeaker covering the bleachers and the band and concessions areas. The system was completed in late May of 2015 in time for the track and field season and 2015's graduation ceremonies. The R2 loudspeakers were aimed with lasers and their precise coverage fills the stadium while avoiding echoes and minimizing neighborhood spill. The sound is great for both announcements and high-energy music and the school is very happy with the results.



Audio Clarity for the Alban Pilgrimage

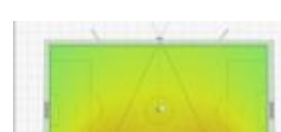
St Albans Cathedral is the oldest site of continuous Christian worship in Britain and The Alban Pilgrimage is the biggest event on the Cathedral calendar. On June 20th the Cathedral welcomed two significant church leaders at the Alban Pilgrimage: the Archbishop of Canterbury, the Most Reverend Justin Welby, and the Archbishop of Rouen, Mgr. Jean-Charles Descubes.



The audio system used R SERIES [R.35-3896](#) loudspeakers throughout to provide optimum intelligibility and coverage for over 5000 people at the event.

As the event's procession ended near St. Alban's Cathedral, Archbishop Justin spoke to a large crowd from the balcony of St. Alban's Town Hall.

Announcing R SERIES Compatibility with EASE Focus 2



Community has added R SERIES to its growing library of manufacturer-authorized EASE Focus 2 GLL data files, allowing system designers to quickly create accurate 3D models of complex R SERIES arrays using the EASE Focus 2 software application from AFMG.

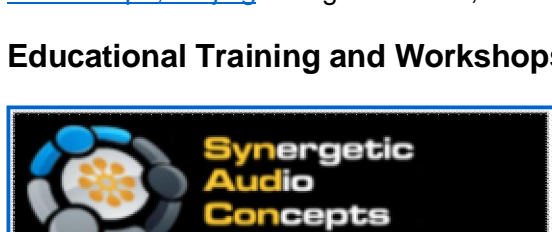
EASE Focus 2 is a free application available directly from AFMG. Manufacturer-authorized EASE and EASE Focus 2 GLL files for Community loudspeakers may be downloaded from [Community's website](#).

Trade Events

[InfoComm Mexico](#) – August 12 -14, 2015

[PALM Expo, Beijing](#) – August 19 - 22, 2015

Educational Training and Workshops



- [Sound Reinforcement for Technicians](#) - October 5 - 7, 2015 - Chicago, Illinois
- [SynAudCon Digital](#) - November 16 - 18, 2015 - Washington, DC
- [Make Wireless Work](#) - December 3 - 4, 2015 - Las Vegas, Nevada

Community Professional Loudspeakers, 333 East Fifth Street, Chester, PA 19013-4511 U.S.A.
 Phone (610) 876-3400 | Fax (610) 874-0190 | www.communitypro.com

