

SPECIFICATIONS (See notes 1 and 2)

Loudspeaker Type: 3-way, Electronically controlled, full-range

Operating Range: 55 Hz - 18 kHz, 65 Hz - 18 kHz (+/-3dB)

Max Input (Passive):

200W continuous, 500W program

28 volts RMS, 63 volts momentary peak

Recommended Power Amp: 420W to 600W @ 4 Ohms

Max Inputs (Biamp):

LF: (Same as for Passive mode)

Recommended LF Power Amp: (Same as for Passive mode)

MF/HF: 120W continuous, 300W program

31 volts RMS, 69 volts momentary peak

Recommended MF/HF Power Amp: 250W to 360W @ 8 Ohms

Sensitivity 1W/1m: 99 dB SPL (50 Hz - 16 kHz 1/3 octave bands)

101 dB SPL (250 Hz - 4 kHz speech range)

Maximum Output: 122 dB SPL / 129 dB SPL (peak)

Nominal Impedance (passive): 4 Ohms

Min Impedance: 3.8 Ohms @ 2 kHz

Nominal Impedances (Biamp): LF: 8 Ohms, HF: 8 Ohms

Nominal -6dB Beamwidth:

80° H (+22° / -33°, 1 kHz - 16 kHz)

50° V (+10° / -12°, 1 kHz - 16 kHz)

Axial Q / DI: 16.4 / 12.1, 1 kHz - 16 kHz

Crossover Frequencies: 200 Hz / 1.8 kHz

Recommended Signal Processing:

200 Hz crossover (for biamp)

45 Hz high pass filter

Drivers (Ferrofluid-cooled):

LF (1) 12" cast frame

MF (2) 6.5"

HF (1) VHF100 1" exit, mylar diaphragm

Driver Protection: PowerSense™ DDP

Input Connection: (2) Neutrik NL4MP

(2) dual banana jacks

Controls: Passive / Biamp switch

Enclosure: 13-ply 18 mm Baltic birch, Polane painted (see options)

Enclosure Hardware:

(2) steel, recessed bar handles

Mounting / Rigging Provisions:

(8) 3/8-16 rigging points, W.L.L. 300 lb. vertical pull each

(3) Pull-back points, W.L.L. 60 lb. each

(2) 5/16-18 inserts for stand adapter *

(4) 5/16-18 inserts for mounting bracket **

Grille: 16 gauge perforated steel (see options)

Required Accessories: Electronic speaker controller

Supplied Accessories: (4) Rubber feet with mounting screws

Optional Accessories: 3/8EYBLTKIT: (4) forged 3/8-16 eyebolts

Dimensions: Height: 25.9 in. / 659 mm

Width (front): 18.1 in. / 460 mm

Width (rear): 12.7 in. / 322 mm

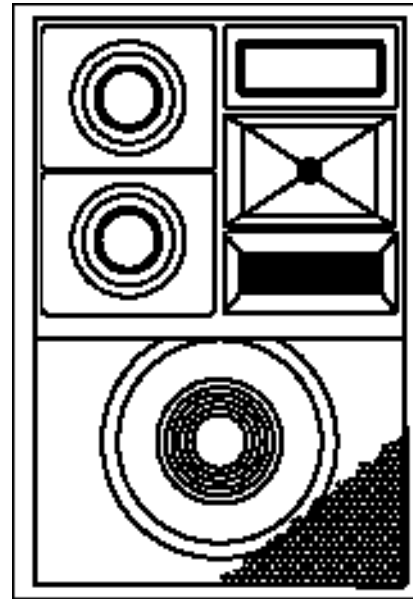
Depth: 14.6 in. / 372 mm

Weight: 87.5 lbs. / 39.7 kg

Shipping Weight: 116 lbs. / 52.6 kg

1. Sensitivity: Free field pink noise measurement at 40 ft / 12.2 m at 50% power; extrapolated to 1 meter and an input of 2 volts RMS.

2. Watts: All wattage figures are calculated using the rated nominal impedance.



25.9 in.
659 mm

APPLICATIONS:

- Arenas / Sports Venues
- Houses of Worship
- Performing Arts Centers
- Theaters
- Dance Clubs
- Portable SR Systems

DESCRIPTION

The Community Solutions SLS918 loudspeaker is a high output, high sensitivity, three-way, full-range loudspeaker system with an integral one-piece fiberglass baffle of Wavefront Coherent™ design. It provides an excellent music system in a compact package. Engineered for use in portable or permanent installations, the loudspeaker enclosure is constructed of void-free, heavily braced Baltic plywood with integral steel bracing connected to threaded 3/8 in. nuts which provide robust suspension points for vertical or horizontal mounting. The system may be used in passive mode or switched for bi-amplification. Available in black or white with white grille cover, with or without handles. Five year limited warranty. Use with Community SBS Series loudspeakers. Electronic speaker controller required.

OPTIONS:

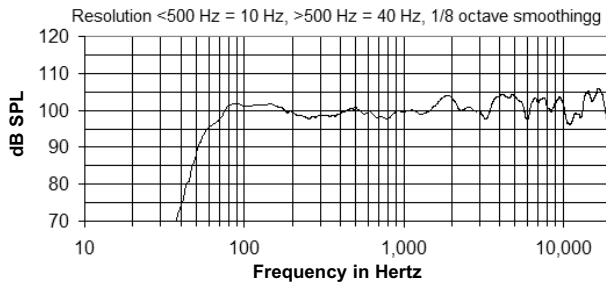
SLS918 = Black paint with handles, no grille cloth.

SLS918WHT = White paint, no handles, white grille cloth

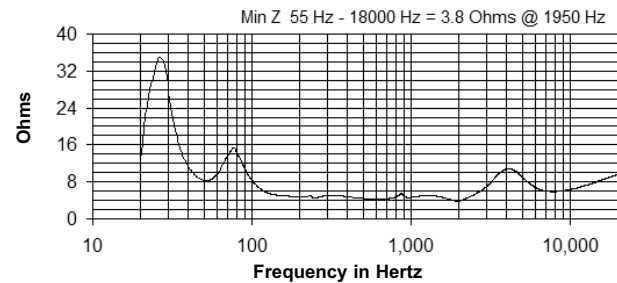
* e.g. Ultimate Support BMB200K

** e.g. Omnimount 300 Series

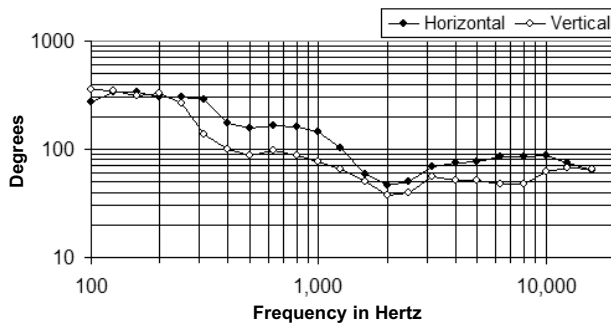
FREQUENCY RESPONSE (WITH CONTROLLER)



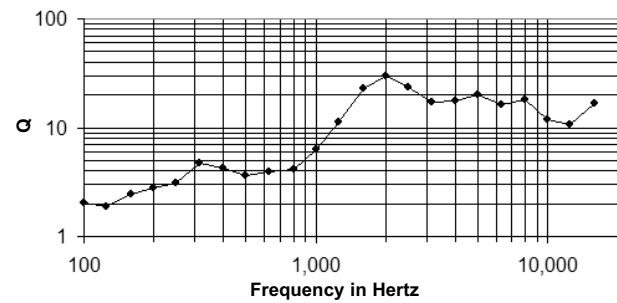
IMPEDANCE



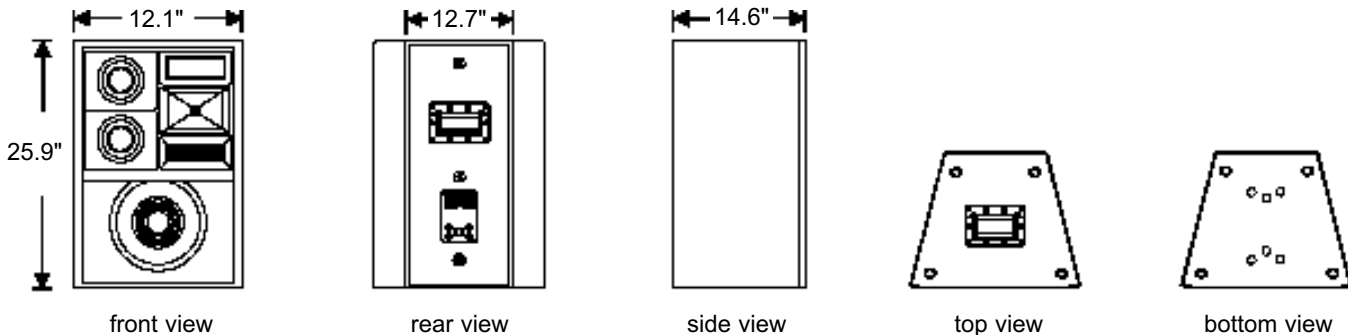
BEAMWIDTH



AXIAL Q



DIMENSIONS



ARCHITECTS' AND ENGINEERS' SPECIFICATIONS

The loudspeaker system shall be a horn-loaded, three-way, full-range bass reflex trapezoidal design with one 12 in. Ferrofluid-cooled woofer, two 6.5 in. Ferrofluid-cooled cone midrange drivers, and one 1 in. exit HF driver with a non-metallic diaphragm mounted on a fiberglass waveguide. Drivers shall be connected to an integral crossover with crossover frequencies of 200 Hz and 1.8 kHz and integral over-current protection circuitry using high positive current coefficient resistors. There shall be two Neutrik NL4MP and two dual banana input connectors. The loudspeaker enclosure shall be well-braced 18 mm 13-ply Baltic birch with a 16 gauge perforated steel grille [with white grille cloth cover and finished with black [white] paint. There shall be eight 3/8-16 integral threaded mounting points connected to internal steel bracing. The system shall have an amplitude response of 65 Hz to 18 kHz (+/- 3 dB), input capability of 28V RMS, 99 dB sensitivity at one meter and 2 V / 4 ohms nominal impedance. The nominal dispersion shall be 80° H x 50° V from 1 kHz to 16 kHz. The loudspeaker shall be 25.9 in. (659 mm) H x 18.1 in. (460 mm) W (front) x 12.7 in. (322 mm) W (rear) x 14.6 in. (372 mm) D and weigh 87.5 lbs (39.7 kg).

Specifications subject to change without notice.