

SPECIFICATIONS (See notes 1 and 2)

Loudspeaker Type: 2-way, full-range
Operating Range: 45 Hz - 16 kHz
60 Hz - 16 kHz (+/- 4 dB)

Max Input Ratings:

400W continuous, 1000W Program
40 volts RMS, 89 volts momentary peak

Recommended Power Amplifier:

830W to 1200W @ 4 Ohms

Sensitivity 1W/1m:

97 dB SPL (100 Hz - 12.5 kHz 1/3 octave bands)
97 dB SPL (250 Hz - 4 kHz speech range)

Maximum Output: 123 dB SPL / 130 dB SPL (peak)

Nominal Impedance: 4 Ohms

Min Impedance: 3.2 Ohms @ 140 Hz

Nominal -6dB Beamwidth:

90° H (-11° / -53°, 2.5 kHz - 12.5 kHz)
40° V (+12° / -16°, 2.5 kHz - 12.5 kHz)

Axial Q / DI: 20.2 / 13.1, 2.5 kHz - 12.5 kHz

Crossover Frequency: 2 kHz

Recommended Signal Processing:

None

Drivers: LF (2) 15" woofer

HF (1) UC1, Ferrofluid-cooled

Driver Protection: IntelliSense™

Input Connection: (2) Locking connectors
(compatible with Speakon™ NL4)
(2) 1/4" jacks

Controls: Biamp / passive HF boost/cut

Enclosure: 7-ply pine plywood

Enclosure Hardware: (4) Handles

Mounting / Rigging Provisions: (1) 1-3/8" stand socket
(4) 3/8-16 hanging point inserts

Grille: 16 gauge perforated steel, black powder coated

Required Accessories: None

Supplied Accessories: None

Optional Accessories:

STRAPKIT: (3) steel straps for suspending

DSC52: digital speaker controller

Mounting poles available for mounting on Tandem Subwoofer

Dimensions:

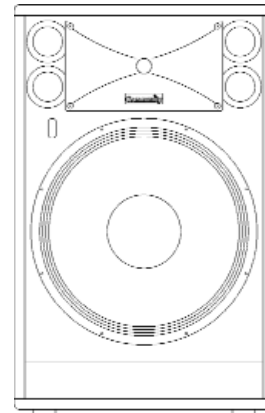
Height: 27.29" / 693.2 mm
Width: 17.275" / 438.8 mm
Depth: 19.886" / 505.1 mm

Weight: 71 lb. / 32.2 kg

Shipping Weight: 80 lb. / 36.3 kg

1. Sensitivity: Free field pink noise measurement at 40 ft / 12.2 m at 50% power; extrapolated to 1 meter and an input voltage of 2 volts RMS.

2. Watts: All wattage figures are calculated using the rated nominal impedance.

**APPLICATIONS:**

- Club Sound Systems
- Mobile and Installed DJ Rigs
- Regional Event Public Address
- Live Tour Reinforcement
- Theater Stage Systems

FEATURES:

- Compact Full-range Design with Exceptional LF Capacity
- Two Patented Cool-Coil™ LF Speakers for High Level Low Distortion LF Response
- IntelliSense™ Multi-Stage Protection Circuitry for Worry-Free Operation
- High Strength Construction Using Low Weight Plywood
- Total Protection Tuf Coat™ Exterior Resists Scratches and Dings
- Cup Handles, 4 Rigging Points and Stand Mount
- Matching Dual 18" and Dual 15" Subwoofers Available

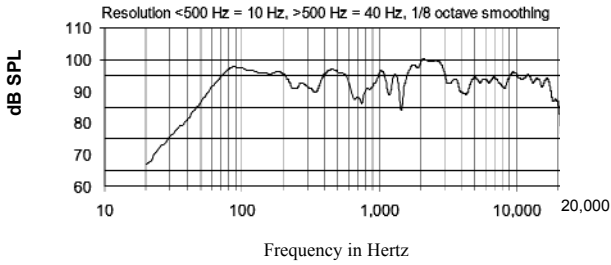
DESCRIPTION

The TD2215 is an exceptional 15" 2-way loudspeaker system delivering all of the features required by today's demanding music scene. Predictable high level low distortion operation, multi-stage protection circuitry, remarkable low frequency response - all in a compact, well braced light weight cabinet clad in a high impact exterior finish. The TD2215 features two of Community's patented Cool-Coil™ 15" speakers, cleverly designed to draw destructive heat away from the voice coil, thus assuring extended high level operation.

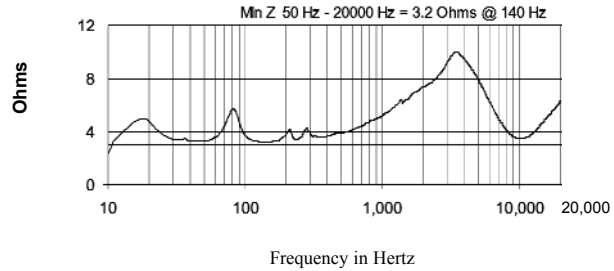
Cup handles are provided for easy portability, a built in stand socket, and four rigging points further enhance the versatility of this system.

Each loudspeaker is backed by Community's Five-Year Warranty.

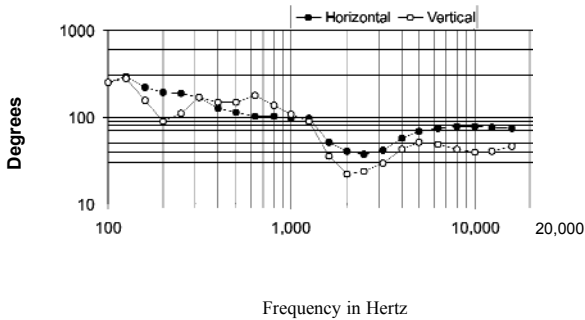
Frequency Response



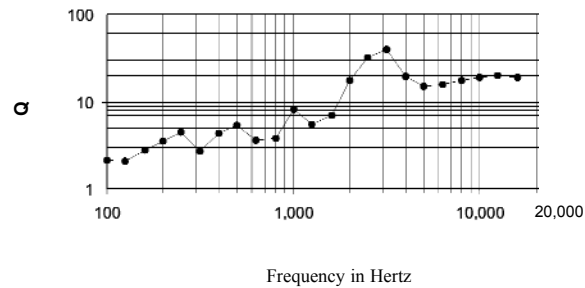
Impedance



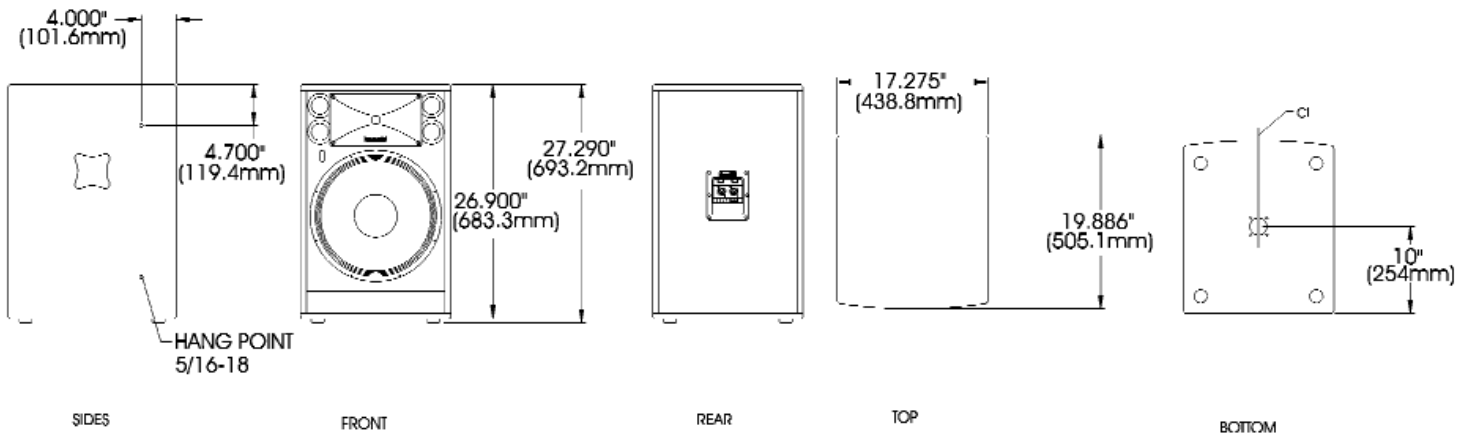
Beamwidth



Axial Q



DIMENSIONS



ARCHITECTS AND ENGINEERS SPECIFICATIONS

The loudspeaker system shall be a horn-loaded, two-way, full-range design consisting of two 15" drivers and one Ferrofluid-cooled compression driver mounted on a horn. The drivers shall be connected to a passive crossover network with a crossover frequency at 2 kHz, with driver protection using high positive current coefficient resistors. The cabinet shall be a 7-ply pine enclosure with a 16 gauge perforated steel grill. The input connections shall be two ¼" jacks, and two locking NL4 type jacks. The system shall incorporate biamp/passive and HF boost controls for flexible operation. The enclosure shall incorporate one 1-3/8" stand socket for pole mounting and four 3/8-16 hanging point inserts. The loudspeaker system shall have an amplitude response of 60-16 kHz (+/- 4 dB SPL), an input capacity of 40V RMS, 97 dB SPL sensitivity @ 2.83V / 1 meter between 100-12.5 kHz at a nominal 4 Ohm impedance. The nominal dispersion shall be 90° x 40° over a frequency range of 2.5 kHz to 12.5 kHz. The dimensions of the enclosure are defined as 27.29" x 17.275" x 19.886" (HWD) at a weight of 71 lbs.