



PROFESSIONAL LOUDSPEAKERS

WET2W8

2-WAY WEATHER RESISTANT LOUDSPEAKER

Loudspeaker Type: 2-way, Full-range
 Operating Range: 60 Hz - 16 kHz
 95 Hz - 15 kHz (+/-5dB)
 Max Input Ratings: 250W Continuous, 600W Program
 32 volts RMS, 69 volts momentary peak
 Recommended Power Amplifier: 500W to 720W @ 4 Ohms
 Sensitivity 1W/1m:
 98 dB SPL (100 Hz - 12500 Hz 1/3 octave bands)
 99 dB SPL (250 Hz - 4 kHz speech range)
 Maximum Output: 122 dB SPL / 129 dB SPL (peak)
 Nominal Impedance: 4 Ohms
 Min Impedance: 2.9 Ohms @ 170 Hz
 Nominal -6dB Beamwidth:
 120° H (+6° / -19°, 2 kHz - 12.5 kHz)
 60° V (+32° / -5°, 2 kHz - 12.5 kHz)
 Axial Q / DI: 9.3 / 9.7, 2 kHz - 12.5 kHz
 Crossover Frequency: 1.5 kHz
 Recommended Signal Processing: 50 Hz high pass filter
 Drivers: LF (2) 8" Carbon fiber, Ferrofluid-cooled
 HF (1) 1" Exit titanium HF driver, Ferrofluid-cooled
 Input Connection: 12' (4m) SJOW #16 gauge
 Enclosure: Hand-laminated multi-layer glass,
 black gel-coat

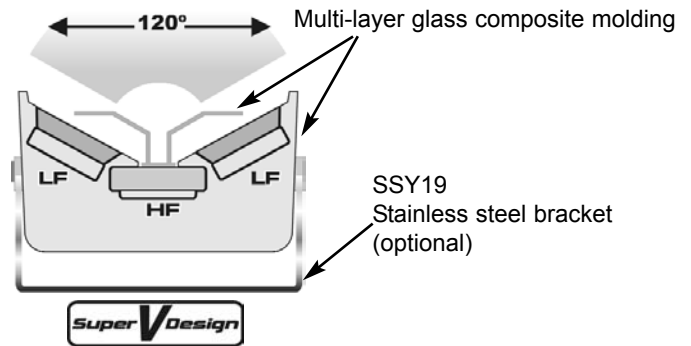
Enclosure Hardware: None
 Mounting / Rigging Provisions: None
 (2) 1/2 - 13 mounting points
 Grille: 3 Layer Weather-Stop™
 Optional Accessories:
 SSY19 Stainless Steel mounting yoke
 TRC120 70/100V, 120/60/30/15 transformer
 TRC400 70/100/140V, 400/200/100/50 transformer
 Dimensions:
 Width: 20 in. / 508 mm
 Height: 10.1 in. / 257 mm
 Depth: 11.5 in. / 292 mm
 Weight: 34 lb. / 15.4 kg
 Shipping Weight: 37 lb. / 16.8 kg

1. Sensitivity: Free field pink noise measurement at 40 ft / 12.2 m at 65% power; extrapolated to 1 meter and an input of 2 volts RMS.
 2. Watts: All wattage figures are calculated using the rated nominal impedance.

DESCRIPTION

The Community WET2W8 loudspeaker is a two-way, full-range loudspeaker system designed to provide high quality music and voice reproduction in applications requiring extreme weather-resistance. It provides an uncompromised musical system in a compact, attractive, weather-resistant package. Engineered for use in permanent installations, the loudspeaker enclosure and faceplate are constructed in hand-laminated black multi-layer glass. The LF cones are of low mass, high stiffness carbon fiber. The HF driver has a diaphragm of titanium. All drivers are Ferrofluid-cooled. The LF drivers and centrally placed ultra-wide 120° HF pattern control horn have been engineered to provide superior uniform pattern over the widest possible bandwidth. The unique molded "Super-V" configuration of the LF drivers provides exceptional uniform midrange pattern that would be impossible to create with a conventional flat wooden baffle plate.

Precise modeling and documentation prove that woofer/horn/woofer placement in traditional under balcony fill-type loudspeaker designs actually exacerbates severe horizontal lobing. The WET2W8's new dual LF driver/HF horn configuration, the "Super-V" design actually prevents deleterious side lobes from forming in the critical voice range. Five-year limited warranty.



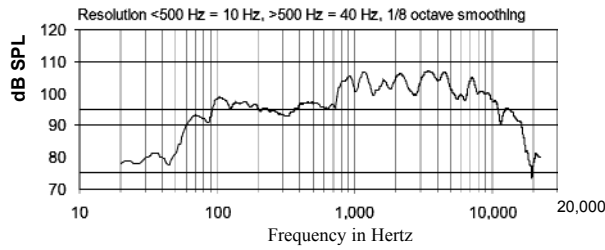
APPLICATIONS:

- Stadium Fill
- Under Balcony Fill
- Foreground Music
- Themeparks/Waterparks
- Outdoor Entertainment Centers
- Cruise Ships/Swimming Pools
- Stage Rail Fill

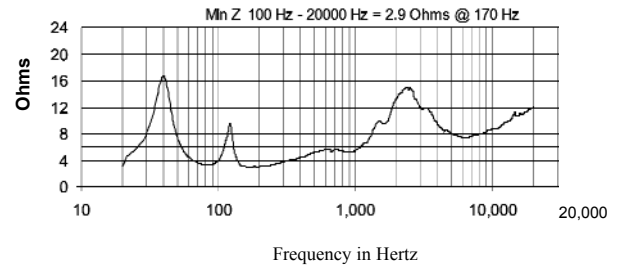
FEATURES:

- All-weather, Multi-layer Glass Composite Enclosure
- Weather Inert Carbon Fiber Cones
- Stainless Steel Hardware
- Integral Mounting Points
- High Power Passive Crossover
- Weather-Stop™ Grille

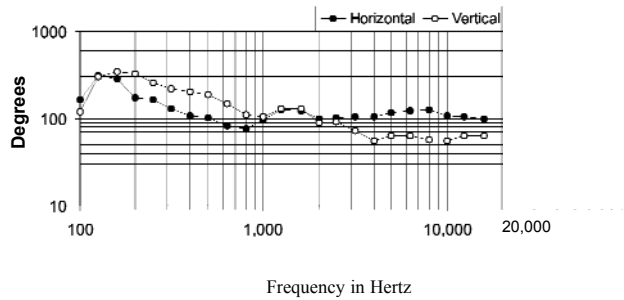
Frequency Response



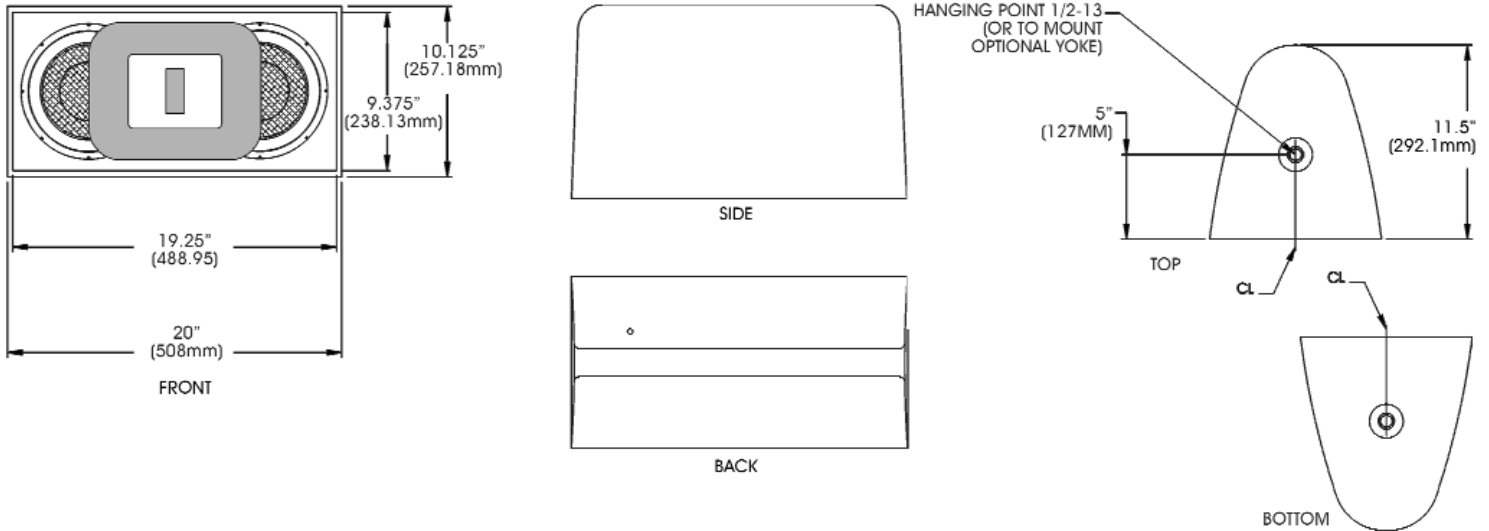
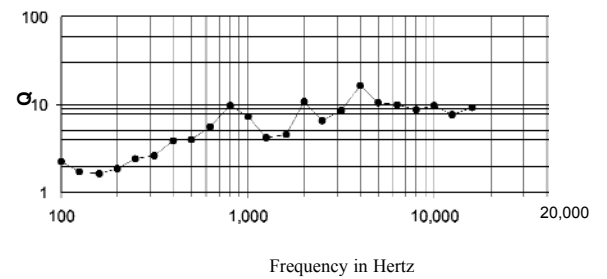
Impedance



Beamwidth



Axial Q



ARCHITECTS AND ENGINEERS SPECIFICATIONS

The loudspeaker shall be a two-way, weather-resistant design with two 8" (205 mm) carbon fiber cone woofers with a centrally mounted 1" exit titanium diaphragm HF compression driver mounted to a pattern control horn. The drivers shall be mounted on a one-piece multi-layer glass composite baffle. All components shall be connected to an integral crossover at a crossover frequency of 1.5kHz. The input connection shall be one 12 ft.(4m) SJOW #16 gauge cable with stripped ends. The loudspeaker enclosure shall be constructed of multi-layer glass composite with a 16 gauge perforated stainless steel grille and two integral 1/2-13 threaded mounting points. The system shall meet the following performance criteria: Amplitude response of 95 Hz to 15 kHz (+/-5dB), 250 watts RMS power handling, 98dB SPL sensitivity (100Hz - 12.5kHz) at 1 meter with 1 watt applied. The nominal system impedance shall be 4 Ohms. Nominal horn coverage pattern shall be 120° x 60° (H x V). Dimensions shall be 20 inches (508 mm) wide, 10.1 inches (257 mm) high, 11.5 inches (292 mm) deep with a weight of 34 lbs. (15.4 kg).