



## PRELIMINARY SPECIFICATIONS

<b>Loudspeaker Type:</b>	2-way, full-range
<b>Operating Range:</b>	65 Hz to 16 kHz 95 Hz to 15 kHz (±3 dB)
<b>Max Input Ratings:</b>	200W, 70V/100V
<b>Recommended Power Amplifier:</b>	25W to 200W @ 70 Volts 50W to 200W @ 100 Volts
<b>Sensitivity (1W/1m):</b>	96 dB SPL (100 Hz to 12500 Hz 1/3 octave bands) 97 dB SPL (250 Hz to 4 kHz speech range)
<b>Maximum Output on 200W Tap:</b>	119 dB SPL
<b>200W Nominal Impedance:</b>	25 ohms
<b>200W Minimum Impedance:</b>	15.4 ohms @ 210 Hz
<b>Nominal -6dB Beamwidth:</b>	120°H (+2° / -51°, 2 kHz to 12.5 kHz) 60°V (+43° / -18°, 2 kHz to 12.5 kHz)
<b>Axial Q / DI:</b>	9.0 / 9.5, 2 kHz to 12.5 kHz
<b>Crossover Frequency:</b>	1.2 kHz
<b>Recommended Signal Processing:</b>	65 Hz high pass filter
<b>Drivers:</b>	LF (2) 8" carbon fiber, Ferrofluid-cooled HF (1) 1" exit, titanium HF driver, Ferrofluid-cooled
<b>Driver Protection:</b>	None
<b>Input Connection:</b>	5 terminal barrier strip
<b>Controls:</b>	Available Taps: 70V switchable taps @ 200W, 100W, 50W, 25W 100V switchable taps @ 200W, 100W, 50W
<b>Enclosure:</b>	13-ply Baltic birch
<b>Mounting/Rigging Provisions:</b>	(6) rigging points (M10 threaded inserts)
<b>Grille:</b>	Steel, black or white powdercoat
<b>Required Accessories:</b>	24 dB/Octave 65 Hz high pass filter
<b>Supplied Accessories:</b>	(1) mounting yoke bracket
<b>Optional Accessories:</b>	None
<b>Dimensions—Height:</b>	11.3 inches / 287 mm
<b>Width:</b>	21.75 inches / 552 mm
<b>Depth:</b>	10.4 inches / 264 mm
<b>Weight (i2W8):</b>	45 lbs / 20 kg
<b>Weight (i2W8 with bracket):</b>	50 lbs / 23 kg
<b>Shipping Weight:</b>	53 lbs / 24 kg



## APPLICATIONS

- Stadium fill
- Underbalcony fill
- Foreground music
- Stage monitor
- Stage rail fill
- Cluster downfill
- Distributed systems

## FEATURES

- Carbon fiber cones
- Integral mounting points
- High power passive crossover
- 18-gauge perforated powdercoated steel grille
- Available in black or white finishes
- Mounting yoke included (black or white)
- Five-year warranty

## DESCRIPTION

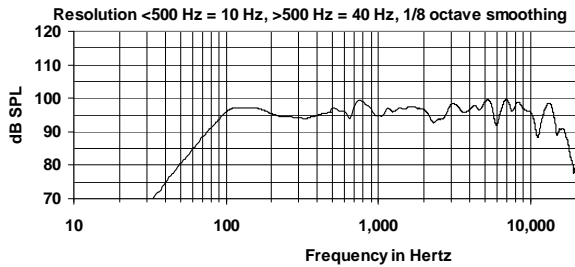
The Community i2W8T loudspeaker is a two-way, full-range loudspeaker system designed to provide high quality music and voice reproduction in applications requiring smooth, ultra-wide, horizontal coverage in 70V/100V applications. It provides an uncompromised musical system in a compact, attractive package. Engineered for use in underbalcony, downfill and distributed installations, the loudspeaker enclosure and faceplate are constructed of 13-ply Baltic birch; LF cones are of low mass, high stiffness carbon fiber; and the HF driver has a diaphragm of titanium. All drivers are Ferrofluid-cooled. The LF drivers and centrally placed ultra-wide 120° HF pattern control horn have been engineered to provide superior uniform pattern over the widest possible bandwidth. The unique "Super-V" configuration of the LF drivers provides exceptional uniform midrange pattern that would be impossible to create with a conventional flat wooden baffle plate.

The multipurpose i2W8T is available in either a black or white painted finish, with a matching steel mounting yoke included for ease of installation. It is outfitted with a factory-installed 200W autoformer with taps at 200W, 100W, 50W and 25W.

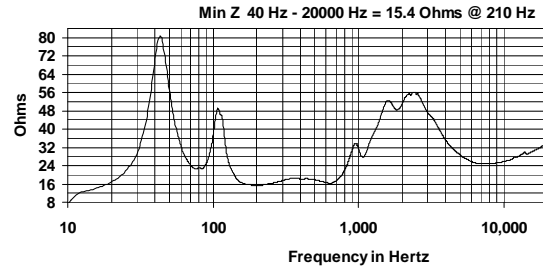
### NOTES:

1. Sensitivity: Free field pink noise measurement at 40 ft (12.2 m) at 65% power; extrapolated to 1 meter and an input of 2.83 volts RMS.
2. Watts: All wattage figures are calculated using the rated nominal impedance.

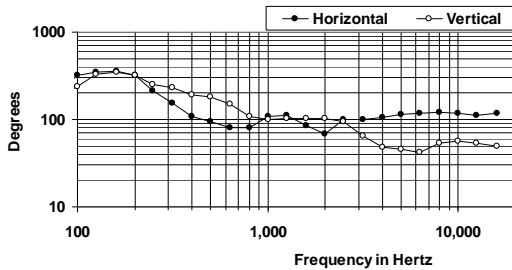
## FREQUENCY RESPONSE



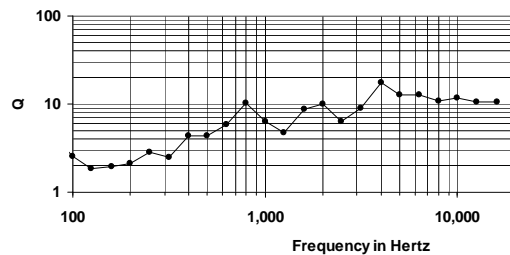
## 200W IMPEDANCE



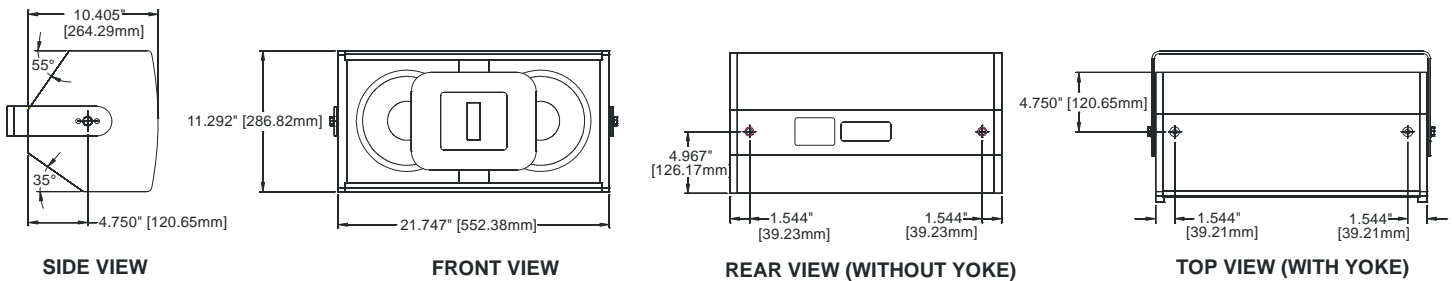
## BEAMWIDTH



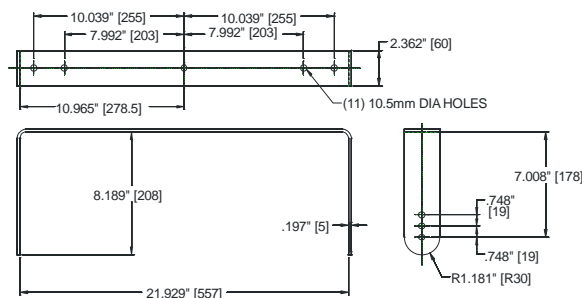
## AXIAL Q



## DIMENSIONS



## Bracket Dimensions:



## ARCHITECTURAL SPECIFICATIONS

The loudspeaker shall be a two-way, full-range design with two 8" (205 mm) carbon fiber cone woofers with a centrally mounted 1" exit titanium diaphragm HF compression driver mounted to a pattern control horn. All components shall be connected to an integral crossover with a crossover frequency of 1.2 kHz. The input connection shall be a 5-terminal barrier strip. The loudspeaker enclosure shall be constructed of 13-ply Baltic birch with a perforated powdercoated steel grille and six integral M10 mounting points. The i2W8T shall meet the following performance criteria: amplitude response of 95 Hz to 15 kHz (+/-3dB), an input capacity of 200W (70V/100V), 96 dB SPL sensitivity (100 Hz - 12.5 kHz) at 1 meter with 1 watt applied. Nominal horn coverage pattern shall be 120° x 60° (H x V). Dimensions shall be 21.75 inches (552 mm) wide, 11.3 inches (287 mm) high, and 10.4 inches (264 mm) deep with a weight of 45 lbs (20 kg).

Community strives to improve its products on a continual basis. Specifications are therefore subject to change without notice.